



Brimstone Introduction

- Spectrophotometer for H₂S, SO₂
- Manufactured In & Supported From Calgary, AB
- Backed by 40 Years of Experience in Natural Gas

Maximum Uptime

- Sulfur Condensation Primarily in the Process Line
- LP (55 psig) Steam-Jacketed Sample Point
- No Sample Lines With Grading Issues
- Handles Off-Ratios

Measurement Certainty

- ≤ 10 Second Response Time
- Proactive Sampling Before Last Condenser
- Fiber Optics Minimize Alignment Issues
- Full Spectrum Analysis

Flexible Installation

- Custom Connections for Variety of Existing Sample Port Sizes
- Split Oven & Controller Option Available (ATEX / IECEx)
- Corrosion Protection from Sealed Fiber Optic Cables
- Wide Ambient Temperature Ranges

Other SRU Applications

- H₂S, SO₂, COS, CS₂ Tail Gas Analyzer for Air Demand
- Amine Liquid Analyzer for TGTU



Note: Photo With Cabinet Doors Open

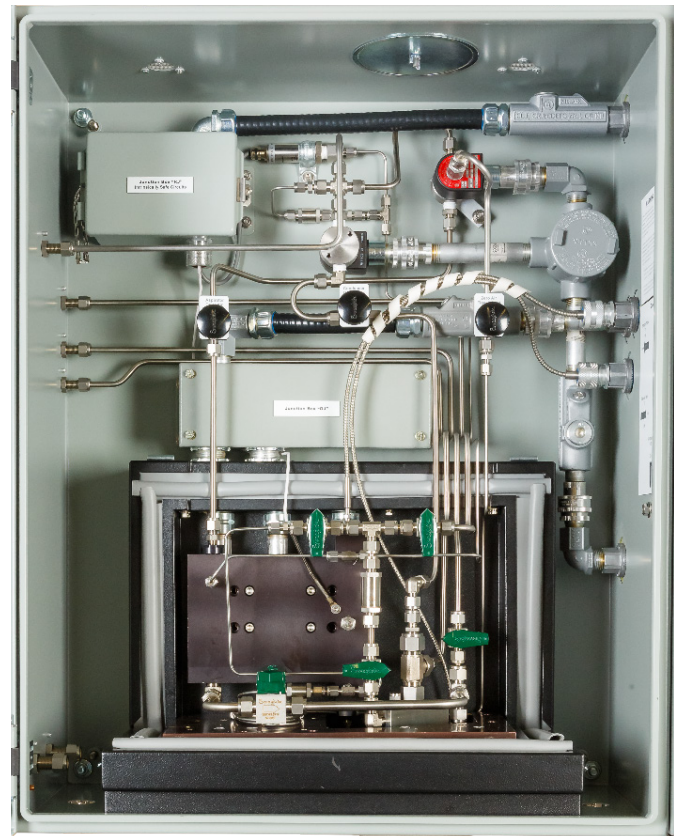


Brimstone™ 202-SPX

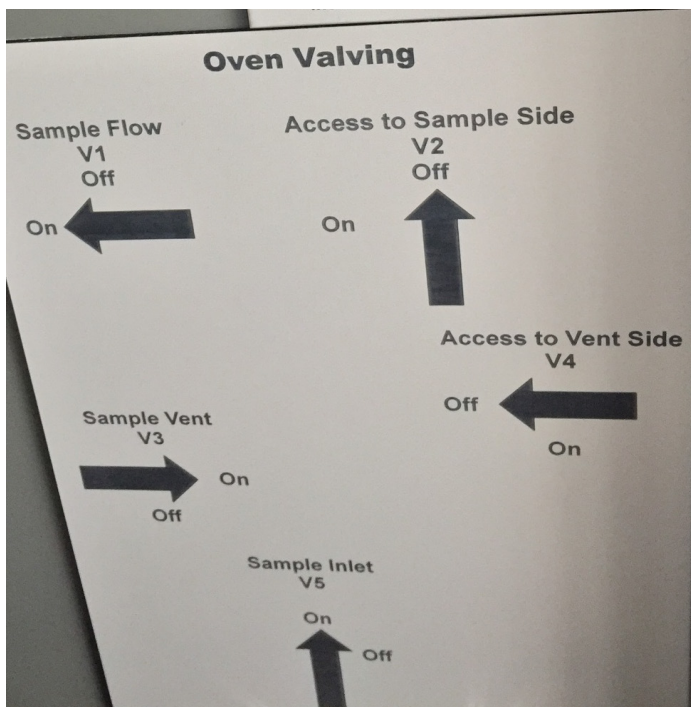
Condensing Sample Probe Minimizes Plugging



Sophisticated Sample System



Clear Identification of Oven Valving



Simple Probe Installation

